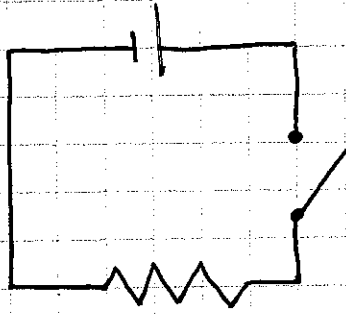


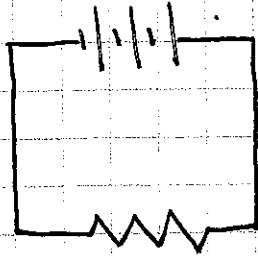
Circuit Diagrams

①

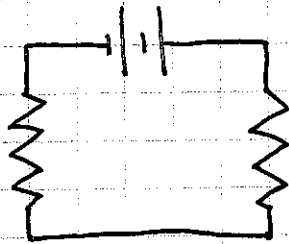
a)



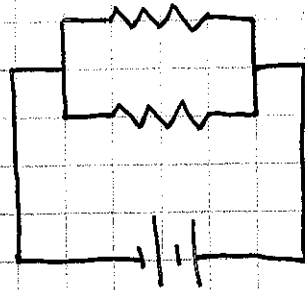
b)



c)



d)



② Diagram A: Parallel b/c the current has to split up to pass through the voltmeter, bulb, and speaker

Diagram B: Series b/c any current passing through one must pass through the other two as well

③ Diagram A:

Series = ammeter + resistor

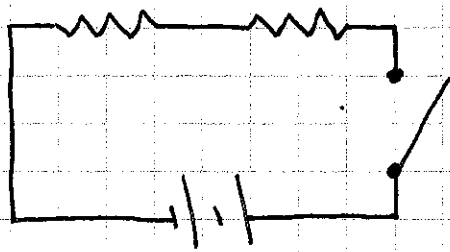
parallel = bulb + speaker

Diagram B:

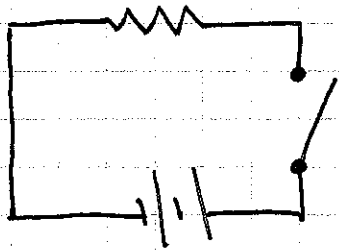
Series = speaker + ammeter

parallel = bulb + resistor

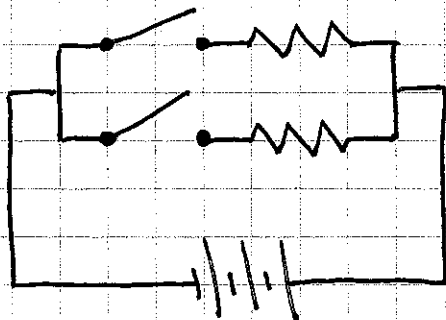
④



⑤



⑥



⑦

